

RICOH

Multi Talented
Office Packages



íicio™ MP 161F/MP 161SPF

Handle your Business Communications the Smart Way

Sharing a multifunctional office device in a larger workgroup or divisional office often proves to be a challenge. You need an office partner that can deal with multiple users and a diversity of jobs. To answer your specific needs, Ricoh offers two reliable and straightforward solutions completing the Aficio™MP 161 series. The Aficio™MP 161_F provides powerful copying and faxing, whereas the Aficio™MP 161_{SPF} also incorporates secure network printing and colour scanning. Everything you need to perform your office tasks time and cost efficiently: a world of possibilities at the touch of a button!



MP 161_F

- Fast copying
- Automatic feeding & duplexing (ARDF)
- Advanced faxing

MP 161_{SPF}

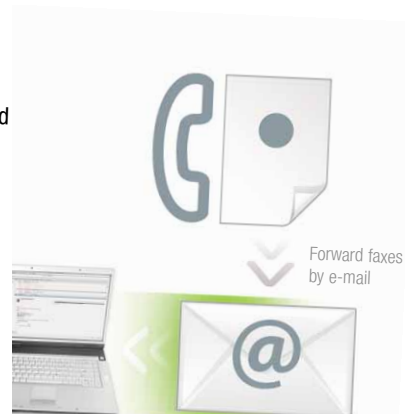
- Complete & secure multifunctionality
- Full featured printing & colour scanning
- Automatic original feeding & duplexing (ARDF)

Productivity Push

- instant availability: warm up of only 30 seconds
- first output in under 7.5 seconds
- high speed production: 16 copies/prints per minute
- no need for frequent refills thanks to a paper capacity of up to 850 sheets
- automatic & fast feeding of large sets of double-sided originals

The Efficient & Secure Communication Station

- deal swiftly with light to heavy fax traffic thanks to the 33.6 Kbps modem speed
- for extra efficiency, 150 speed dials and 16 quick dials are available
- save time & improve image quality by sending faxes directly from your PC¹
- reduce the distribution of printed faxes & forward faxes by e-mail¹



Save Time & Costs

With the Aficio™MP 161_F/MP 161_{SPF}, office efficiency increases. Do away with time consuming manual original feeding; the handy Automatic Reverse Document Feeder (ARDF) accommodates up to 50 sheets at once. Double-sided output can easily be produced with the standard duplex unit: you save paper and costs.



Scan in Colour¹

With the Aficio™MP 161^{SPF} you can easily digitise your paper files without having to invest in a separate colour scanner. Scan up to 50 colour and/or double-sided originals at a time directly to various locations. Books, magazines and other bulky print media can be scanned using the platen glass. Digitise your documents and save time and space.



Distribute Intelligently¹

Discover the advantages of the Aficio™MP 161^{SPF}'s many distribution possibilities. You can send scanned documents to any e-mail address in the world or directly to a dedicated network folder. Scanned documents that are too large to be sent by e-mail can conveniently be uploaded to an FTP server for easy sharing with remote offices.



Versatile Networking¹

- simple integration into specific networks, including non-Windows® and host printing environments
- easy monitoring and management of networked peripherals through common web browsers (Web Image Monitor)



With the Greatest Ease

The Aficio™MP 161^F/MP 161^{SPF} can easily be operated and maintained. Simply plug them in and they are ready for business! Their straightforward operation panel makes sure there's no need for complicated user manuals or technical training. Paper can be replenished in no time and replacing toner cartridges takes only seconds thanks to full front accessibility.

Designed to Last

Drawing on years of experience, technological innovation and continuous market anticipation, Ricoh offers highly reliable devices which deliver solid performance. Ricoh's digital solutions eliminate the limitations of analogue systems and offer a whole new level of professionalism. You can now fully depend on your equipment as well as benefit from low running costs.

Our Green Commitment

Ricoh uses toxic free materials for all its hardware². Our low energy toner production methods are unique. The Aficio™MP 161^F/MP 161^{SPF} take environmental care even further: with their ultra low power consumption, clean and quiet operation, as well as standard duplexing, they contribute to sustainable business.



¹ Available on the Aficio™MP 161^{SPF}.

² In compliance with EU RoHS directive (RoHS: Restriction of Hazardous Substances, July 2006).



Aficio™ MP 161F/MP 161SPF

Specifications



COPIER

Copying process:	Twin laser beam scanning and electro photographic printing	
Copy speed:	16 copies per minute	
Resolution:	600 dpi	
Multiple copy:	Up to 99	
Warm up time:	Less than 30 seconds	
First output speed:	Less than 7.5 seconds	
Zoom:	50 - 200% (in 1% steps)	
Memory:	MP 161F:	128 MB (shared)
	MP 161SPF:	384 MB (shared)
Paper input capacity:	Standard:	1 x 250-sheet paper tray
	Maximum:	1 x 100-sheet multi-bypass tray
		850 sheets
ARDF capacity:	50 sheets	
Paper output capacity:	250 sheets (internal tray)	
Paper size:	Standard tray:	A5 - A4
	Bypass tray:	A6 - A4
	Duplex tray:	A4
Paper weight:	Standard tray:	60 - 90 g/m ²
	Bypass tray:	60 - 157 g/m ²
	Duplex tray:	64 - 90 g/m ²
Dimensions (W x D x H):	485 x 450 x 481 mm	
Weight:	Less than 29 kg	
Power source:	220 - 240 V, 50/60 Hz	
Power consumption:	Operation:	Less than 900 W
	Energy saver mode:	Less than 30 W



PRINTER (Aficio™MP 161SPF)

Print speed:	16 prints per minute	
Printer language:	Standard:	PCL5e, PCL6, RPCS™
	Option:	Adobe® PostScript® 3™
Resolution:	600 x 600 dpi	
Interface:	Standard:	USB 2.0
	Option:	Ethernet 10 base-T/100 base-TX
		Wireless LAN (IEEE 802.11b)
		Bi-directional IEEE 1284
		Bluetooth
Network protocol:	TCP/IP, IPX/SPX, SMB, AppleTalk	
Supported environments:	Windows® 98/Me/NT4.0/2000/XP/Server 2003	



SCANNER (Aficio™MP 161SPF)

Scan speed:	Maximum 22 originals per minute
Resolution:	Maximum 100 - 600 dpi
Original size:	A5 - A4
Bundled drivers:	Network, TWAIN
Scan to e-mail:	SMTP, TCP/IP or POP3 before SMTP
Destination addresses:	Maximum 100 per job
Stored destination addresses:	Maximum 150
Address book:	Via operation panel, LDAP, Web Image Monitor or SmartDeviceMonitor™
Scan to folder:	SMB, NCP or FTP protocol
Destination:	Maximum 32 folders per job



FAX

Circuit:	PSTN, PBX
Compatibility:	ITU-T Group 3
Modem speed:	Maximum 33.6 Kbps
Compression method:	MH, MR, MMR, JBIG
Scanning speed:	2 seconds
Speed dial:	Maximum 150 numbers
One touch dial:	Maximum 16 numbers
Memory capacity:	4 MB (320 sheets)



SOFTWARE SOLUTIONS (Aficio™MP 161SPF)

SmartDeviceMonitor™, Web SmartDeviceMonitor™ 2
Web Image Monitor, DeskTopBinder™ Lite

OPTIONS

- 1 x 500-sheet paper tray
- Counter Interface
- Cabinets (small, large)
- Adobe® PostScript® 3™ (MP 161SPF)
- Bi-directional IEEE 1284 (MP 161SPF)
- Wireless LAN (IEEE 802.11b) (MP 161SPF)
- Bluetooth (MP 161SPF)

For availability of models, optional apparatus and software, please contact your local Ricoh representative.



ISO9001: 2000 certified
ISO14001 certified

Ricoh believes in conserving the earth's precious natural resources.

All brand and/or product names are trademarks of their respective owners.

Specifications and external appearance are subject to change without notice. The colour of the actual product may vary from the colour shown in the brochure.

Copyright © 2006 Ricoh Europe
All rights reserved. This brochure, its contents and/or layout may not be modified and/or adapted, copied in part or in whole and/or incorporated into other works without the prior written permission of Ricoh Europe B.V.

RICOH