

Advanced Series Monochrome Document Systems

Designed for today's individual workstyles. From media handling to workflow and collaboration, the new Advanced Series delivers the features businesses need to get the job done.

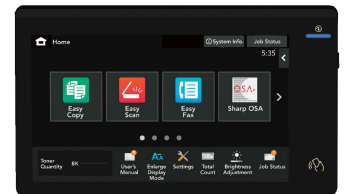
The new Advanced Series monochrome document systems enable workers to collaborate and share information seamlessly and securely. Enhanced cloud services such as Microsoft Teams makes it easy to streamline communication and enhance productivity with hybrid workers.

Easy-to-use Touchscreen: Award-winning design that delivers an accurate, responsive user experience, imperative for today's sophisticated workflows.

Technology Focused on Efficiency: Innovative features like optional double-feed scan detection and enhanced auto skew correction ensure jobs come out right the first time, every time.

Versatile Application Integration: Easy access to expanded cloud services, quickly connect with mobile devices.

Leading Security: The Advanced Series uses the latest security technology in today's hybrid working environments to protect endpoint devices from security threats.



10.1" (diagonally measured) customizable touchscreen display.



Built-in retractable keyboard simplifies email address and subject line entries.



New Inner Folding Unit option offers a variety of fold patterns, including tri-fold, z-fold and others.



High capacity 300-sheet D SPF scans documents at up-to 280 images per minute.

- 300-sheet duplexing single-pass feeder offers double feed-detection (optional) and scans up-to 280 images per minute.
- Flexible paper handling supports media up-to 300 gsm, allowing users to print on a wide variety of paper stock or media.
- Smart controller design ensures MFP firmware is up to date by periodically checking for updates.
- Built-in walk-up motion sensor automatically detects approaching users immediately wakes the machine, making it ready for use within seconds.
- Energy Star 3.0 certified offers among the lowest standby power consumption in the category.
- Enhanced touchscreen delivers an accurate, responsive user experience and provides easy access to features.
- Collaborate with hybrid workers using popular cloud services, such as Microsoft Teams, Google Drive™, and Dropbox.
- Strong, multi-layered security includes system integrity check at startup, firmware attack prevention and optional Bitdefender antivirus help protect your data.
- Supports native Universal Print from Microsoft, enabling businesses to easily adapt to this popular cloud service.
- Wireless LAN supports 5 GHz Wi-Fi for stable, high-speed network communication.
- Sharp OSA® Technology provides a secure and intuitive user experience for integrated workflows.

BP70M31/BP70M36/BP70M45 Specifications

Main Specifications

BP70M31	Base models include multitasking controller, 300-sheet DSPF, PCL 6 and Adobe PostScript 3 printing systems, network scanning, auto duplexing, 1 x 550-sheet paper drawer, 100-sheet bypass tray.	
BP70M36		
BP70M45		
Type	Monochrome multi-function digital document system	
Display	10.1" (diagonally measured) colour dot matrix high-resolution touch panel filling display, 1,024 x 600 dots (W-SVGA)	
Functions	Copy, print, network print, network scan, document filing and fax ¹	
Copy System	Dry electrostatic transfer/Dual component developer/Magnetic brush development/OPC drums/Pad fusing/White LED exposure	
Originals	Sheets and bound documents	
Max. Original Size	11" x 17"	
Output Size	Min. 5.5" x 8.5", Max. 12" x 18"	
Copy Speed	31/36/45 ppm (8.5" x 11")	
Multiple Copy	Max. 9,999 copies	
First Copy Time (In Seconds)²	BP70M31	BP70M36/70M45
	Platen Glass: 5.4	4.5
	RSFP: 7.4	6.7
Warm Up Time	25 seconds (from main power switch on), 14 seconds (from [Power] button on)	
Magnification	25% to 400% in 1% increments (with DSPF 25%-200%)	
Original Feed Scan Speed	300-sheet DSPF with original size detection Copy: Up-to 280 ipm (Mono) Scan: Up-to 280 ipm (Mono/Colour)	
Original Sizes	5.5" x 8.5", 8.5" x 11", 8.5" x 11" R, 8.5" x 14", 11" x 17"	
Paper Capacity	Standard: 650 Sheets, Maximum: 6,300 Sheets	
Paper Feed System	Standard: (1) paper drawer 550 sheets (letter/legal/ledger/statement size) or up-to 50 envelopes (max. height: 25 mm), 100-sheet (or 20 envelope) bypass tray, Optional: Single, double, or triple paper drawer(s) (550, 1,100, or 1,650 sheets), split tandem paper drawers 2,100 sheets (letter) + (1) 550-sheet paper drawer (letter/legal/ledger/statement size).	
Paper Weights and Types	Paper drawers: 18 lb. bond to 110 lb. cover, Drawer 1: 20-24 lb. bond or Monarch/Com-9 envelopes. Split Tandem Drawers: 18 lb. bond to 28 lb. bond or plain, pre-printed, recycled, pre-punched, letterhead and colour paper, Bypass tray: 16-28 lb. bond (plain paper), 13-16 lb. bond (thin paper), 28 lb. bond-110 lb. cover (heavy paper), tab paper (letter) and Monarch/Com-10 envelopes. Also label, gloss, pre-printed, recycled, pre-punched, letterhead and colour paper or OHP film.	
Duplexing	Standard automatic duplex copying and printing	
CPU Interface	Up-to 1.6 GHz multi-processor design RJ-45 Ethernet (10/100/1000 Base-T), USB 2.0: 1 host port (front), USB 3.0: 2 host ports; wireless 802.11 a/b/g/n/ac	
Memory	Standard 5 GB copy/print (shared)	
Solid State Drive	256 GB, 512 GB (option)	
Copy Resolution	Scan: Up-to 600 x 600 dpi Output: Up-to 1,200 x 1,200 dpi	
Copy Modes	Monochrome/Greyscale	
Exposure Control Modes	Automatic, Text, Text/Photo, Text/Printed-Photo, Printed-Photo, Photo, Map, Pale-Colour Document, Settings: Auto or 9 step manual	
HalfTone Copy Features	256 gradations/2 levels (monochrome) Scan-Once Print-Many, electronic sorting, offset-stacking, Auto Paper Selection (APS), Auto Magnification Selection (AMS), Auto Tray Switching (ATS), black-white reversal, blank page skip, book copy, book divide, card shot, centre erase, centring, cover pages, dual page copy, edge erase, image edit, image preview, insert pages, job build, job programs, margin shift, mirror image, mixed size original, multi-page enlargement, original count, pamphlet style, proof copy, repeat layout, reserve copy, rotated copy, stamp, stamp custom image, suppress background, tab copy, tab-paper insertion, tandem copy, toner save mode, transparency inserts, watermark, 2-in-1 / 4-in-1 / 8-in-1 multi shot	

Main Specifications (continued)

Account Control	Up-to 1,000 users. Supports user-number authentication via local, LDAP and Active Directory for copy, print, scan and document management
Output Tray Capacity	Centre Exit Tray (Main): 400 sheets (face down) Job Separator (Upper Tray): 100 sheets (face down) Right Side Exit Tray: 120 sheets (face down)
Cloud Supported Services	Google Drive, Box, OneDrive for Business, SharePoint Online, Dropbox, Gmail™, Microsoft Teams
Network Protocols	TCP/IP (IPv4, IPv6, IPsec), HTTP/HTTPS, IPP/IPP-SSL, FTP/FTPS, SNMPv3, SMTP/SMTP-SSL, POP3/POP3-SSL, LDAP/LDAP-SSL, 802.1x for Windows and Unix.
Network and Data Security	Includes IP/MAC address filtering, protocol filtering, port control, user authentication (local/LDAP/Active Directory), WPA3™ wireless, TLS 1.3 Encryption, Kerberos support ¹
Firmware Management	Flash ROM with local (USB), network update capability and firmware update 1 to N with Sharp Remote Device Manager (available for download)
Device Setup	Web-based management with user/admin level login
Service/Functions	Remote Front Panel, remote access to service logs and click counts
Accessibility Features	Free stop tilting front panel, adjustment of key touch sound and speed, document feeder free stop, job programs, remote front panel, universal grip for paper trays, disable screen timeout
Environmental Standards	International Energy Star Program Ver. 3.0, European RoHS, Blue Angel
Power Source	110-127 V AC, 60 Hz, 15 A receptacle
Power Consumption	1.5 kW or less
Weight	Approx. 157 lbs.
Dimensions	Approx. 24" (w) x 26" (d) 34" (h)
Network Printing System	
PDL	Standard PCL 6, Adobe PostScript 3
Resolution	1,200 x 1,200 dpi
Print Speed	31/36/45 pages per minute (8.5" x 11")
Print Drivers	Windows 8.1, Windows 10, Windows 11, Windows Server 2012/2016/2019/2022, Windows PPD, OS X 10.10 - macOS 12, UNIX®, Linux®, Universal Print (native)
Mobile Printing¹	Android™ printing framework (Sharp Print Service Plugin), Sharpdesk Mobile, Apple AirPrint
Print Features	Auto configuration, serverless print release, chapter inserts, confidential print, continuous printing, custom image registration, document control, document filing, duplex printing, electronic sorting, form overlay, hidden pattern print, image rotation, job bypass print, job retention, layout print, margin shift, multiple pamphlet, network tandem print, N-up printing, offset stacking, page interleave, pamphlet style, poster print, proof print, print and send, tab paper print, tab printing, transparency inserts, tray status, user authentication single sign-on, watermarks, zoom print
Direct Printing	File Types: TIFF, JPEG, PCL, PRN, TXT, PNG, PDF, Compact PDF, Encrypted PDF, PS, DOCX, XLSX and PPTX, Methods: FTP, SMB, Web page, Email and USB memory, Adobe Embedded Print Engine support for PDF file formats.
Resident Fonts	80 outline fonts (PCL), 139 fonts (PS)
Interface	RJ-45 Ethernet 10/100/1000 Base-T, USB 2.0, Wireless
Operating Systems and Environments	Windows 8.1, Windows 10, Windows 11, Windows Server 2012/2016/2019/2022, Chrome OS™, OS X 10.10 - macOS 12, Unix®, Linux®, Citrix®, and SAP device types ¹
Printing Protocols	LPR, IPP, IPPS, Raw TCP (port 9100), FTP, POP3, POP3S, HTTP, HTTPS, and LPR and LPD for Unix
Network Scanning System	
Scan Modes	Standard: Colour, monochrome, greyscale
Max. Original Size	11" x 17"
Optical Resolution	600 dpi

Network Scanning System (continued)

Output Modes	600 dpi, 400 dpi, 300 dpi, 200 dpi, 150 dpi, 100 dpi
Image Compression	Monochrome Scanning: Uncompressed, G3 (MH), G4 (MR/MMR) Colour/Greyscale: JPEG (high, middle, low) Internet Fax mode: MH/MMR (option)
Image Formats	Monochrome: TIFF, PDF, PDF/A, Encrypted PDF, XPS, Searchable PDF, DOCX, XLSX, PPTX, TXT, and RTF. Colour/Greyscale: TIFF, JPEG, PDF, PDF/A, Compact PDF, Encrypted PDF, XPS, Searchable PDF, DOCX, XLSX, PPTX, TXT, and RTF. Internet Fax: TIFF-FX, TIFF-F, TIFF-S ¹
Scan Destinations	Email, Desktop, FTP, Folder (SMB), USB, Internet fax (option), Super G3 fax (option), Teams Folder, OneDrive, Box, Dropbox
One-touch Destinations	Up-to 2,000 (combined scan destinations)
Group Destinations	Up-to 500
Programs	48 (combined)
Max. Jobs	Up-to 100
Email Connect	Standard Gmail connector, standard Exchange connector
Scanning Protocols	HTTP/HTTPS, FTP/FTPS, SMTP/SMTP-SSL/ESMTP
Software¹	Sharpdesk Mobile (download)
Optional Equipment	
BP70ABD	Deluxe Copier Cabinet Base
BPDE12	Stand/1 x 550-sheet Paper Drawer
BPDE13	Stand/2 x 550-sheet Paper Drawers
BPDE14	Stand/3 x 550-sheet Paper Drawers
BPDE15	Stand/1 x 550 + 2,100-sheet Split Tandem Paper Drawers
BPCL10	3,000-sheet Large Capacity Cassette (letter, requires BPDE12/DE13/DE14/DE15)
BPDD10	Double Feed Detection Kit
MXLT10	Long Paper Feeding Tray
BPFN11	50-sheet Staple Inner Finisher
BPFN13	1K Stacking 50-sheet Staple Finisher
BPFN14	1K Stacking 50-sheet Staple/Saddle-Stitch Finisher
BPFN15	3K Stacking 65-sheet Staple Finisher
BPFN16	3K Stacking 65-sheet Staple/Saddle-Stitch Finisher
BPFD10	Inner Folding Unit
BPBR10	Paper Pass Unit (required for BPFN13/14/15/16)
MXPN14B	3-Hole Punch Unit (requires BPFN11)
MXPN15B	3-Hole Punch Unit (requires BPFN13/14)
MXPN16B	3-Hole Punch Unit (requires BPFN15/16)
MXSCX1	Staple Cartridge for BPFN11/13
ARSC2	Saddle-Stitch Staple Cartridge for BPFN14
MXSC11	Staple Cartridge for BPFN15/16
MXSC12	Saddle-Stitch Staple Cartridge for BPFN16
BPTR12	Right Side Exit Tray
MXTR20N	Job Separator Tray
BPTU10	Centre Exit Tray
BPUT10	Utility Table
BPFX11	Fax Expansion Kit
MXFWX1L	Internet Fax Expansion Kit
MXPF10	Bar Code Font Kit
MXAMX1L	Application Integration Module
BPSD10	High Capacity SSD (512 GB)
BPVD10L	Virus Detection Kit
BPF12UL	Data Security Kit
DVENDFSV	Generic Vendor Interface Kit
Supplies	
BPNT700	Toner Cartridge
BPNV700	Developer
BPDR700	Drum
BPBH701	Toner Collection Container

¹ Some features require optional equipment. See your local dealer.
² May vary depending on product configuration, machine settings and operating and/or environmental conditions.



SHARP ELECTRONICS OF CANADA LTD.
 335 Britannia Road East, Ste. 101
 Mississauga, Ontario L4Z 1W9
 1-800-567-4277 • www.sharp.ca

Design and specifications subject to change without notice. Sharp, Sharp OSA, Sharpdesk, and all related trademarks are trademarks or registered trademarks of Sharp Corporation and/or its affiliated companies. Microsoft, Active Directory, Excel, Microsoft 365, Microsoft Teams, OneDrive, PowerPoint, SharePoint, Windows, and Windows Server are trademarks of the Microsoft group of companies. Android, Gmail, and Google Drive are trademarks or registered trademarks of Google LLC. Adobe, the Adobe logo and PostScript are either registered trademarks or trademarks of Adobe in the US and/or other countries. Qualcomm DirectOffice is a product of Qualcomm Technologies, Inc. and/or its subsidiaries. Qualcomm is a trademark of Qualcomm Incorporated, registered in the United States and other countries. DirectOffice is a trademark of CSRI Imaging US, LP, registered in the United States and other countries. AirPrint, Mac, macOS and OS X are trademarks of Apple Inc., registered in the US and other countries. Bitdefender is a trademark or registered trademark of Bitdefender SRL. WiFi and WPA3 are trademarks or registered trademarks of WiFi Alliance®, ENERGY STAR and the ENERGY STAR mark are registered trademarks owned by the U.S. Environmental Protection Agency. All other trademarks are the property of their respective owners.

Printed in Canada.
 OSG-OS-BPA-CR5-S-E-PDF-12/2022